

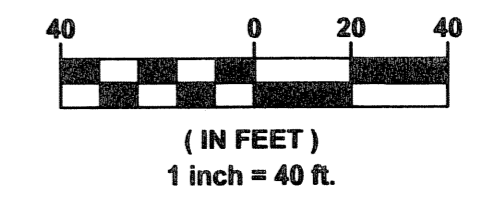
35

# LEGACY PLACE COMMERCIAL

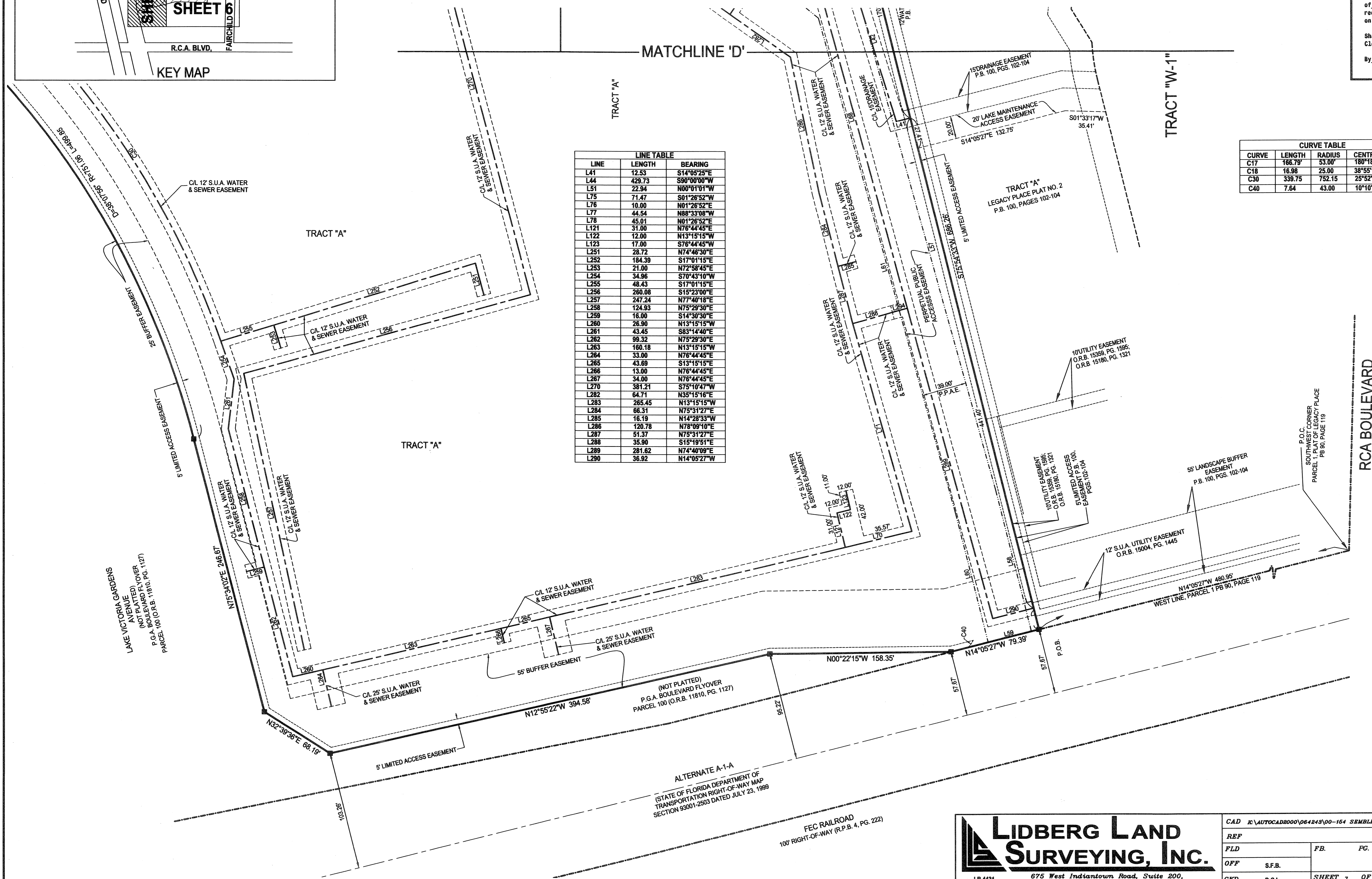
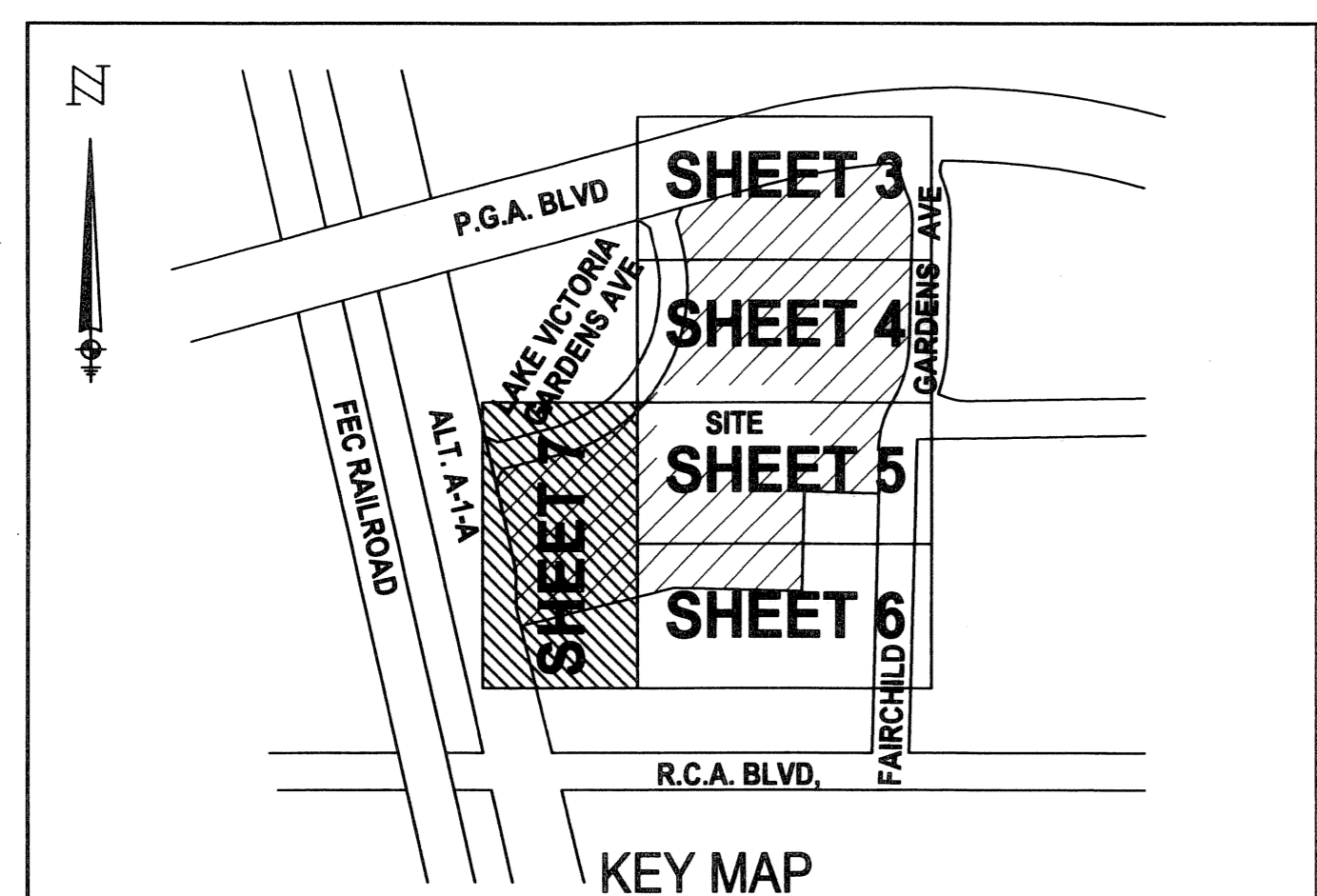
BEING A REPLAT OF A PORTION OF PARCEL 1, LEGACY PLACE, AS RECORDED IN  
 PLAT BOOK 90, PAGES 119 THROUGH 121, PUBLIC RECORDS OF PALM BEACH COUNTY, FLORIDA  
 LYING IN SECTION 6, TOWNSHIP 42 SOUTH, RANGE 43 EAST  
 CITY OF PALM BEACH GARDENS, PALM BEACH COUNTY, FLORIDA  
 SHEET 7 OF 8 JULY, 2006



GRAPHIC SCALE



STATE OF FLORIDA  
 COUNTY OF PALM BEACH  
 This plat was filed for  
 record at \_\_\_\_\_ M. this day  
 of \_\_\_\_\_, 2006 and duly  
 recorded in Plat Book No. \_\_\_\_\_  
 on Pages \_\_\_\_\_ thru \_\_\_\_\_.  
 Sharon R. Beck  
 Clerk and Comptroller  
 By \_\_\_\_\_ D.C.



LINE	LENGTH	BEARING
L41	12.53	S14°05'25"E
L44	428.73	S90°00'00"W
L51	22.94	N00°01'01"W
L75	71.47	S01°28'52"W
L76	10.00	N01°28'52"E
L77	44.54	N88°33'08"W
L78	45.01	N01°28'52"E
L121	31.00	N78°44'45"E
L122	12.00	N13°15'15"W
L123	17.00	S78°44'45"W
L251	28.72	N74°46'30"E
L252	184.39	S17°01'15"E
L253	21.00	N72°58'45"E
L254	34.96	S70°43'10"W
L255	48.43	S17°01'15"E
L256	260.08	S15°23'00"E
L257	247.24	N77°40'18"E
L258	124.93	N75°29'30"E
L259	16.00	S14°30'30"E
L260	26.90	N13°15'15"W
L261	43.45	S83°14'40"E
L262	99.32	N75°29'30"E
L263	160.18	N13°15'15"W
L264	33.00	N78°44'45"E
L265	43.69	S13°15'15"E
L266	13.00	N78°44'45"E
L267	34.00	N78°44'45"E
L270	381.21	S75°10'47"W
L282	64.71	N35°15'16"E
L283	265.45	N13°15'15"W
L284	66.31	N75°31'27"E
L285	16.19	N14°28'33"W
L286	120.78	N78°09'10"E
L287	51.37	N75°31'27"E
L288	35.90	S15°19'51"E
L289	281.62	N74°40'09"E
L290	36.92	N14°05'27"W

CURVE	LENGTH	RADIUS	CENTRAL ANGLE
C17	166.79'	53.00'	180°18'20"
C18	16.98	25.00	38°55'10"
C30	339.75	752.15	25°52'52"
C40	7.64	43.00	10°10'45"

LB 4431  
 675 West Indian Town Road, Suite 200  
 Jupiter, Florida 33458 TEL. 561-748-8454

CAD K:\AUTOCAD2000\064243\00-154-SEMPLER\DWG\00-154-306.DWG

REF	FB.	FC.	JOB	00-154 (306)
FLD	S.F.B.		DATE	02/03/2006
OFF	D.C.L.	SHEET 7 OF 8	DWG	D00-154P